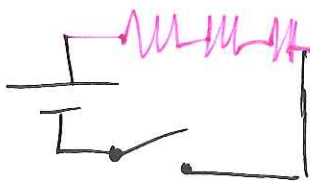
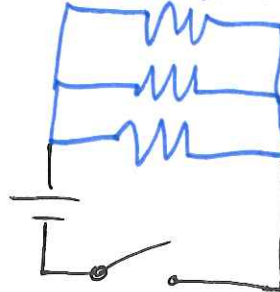


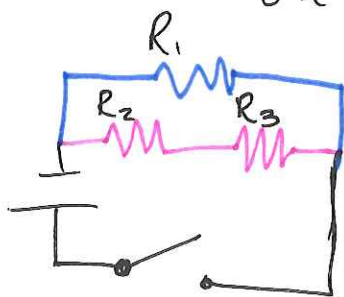
Series



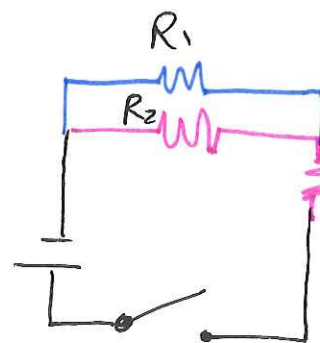
Parallel



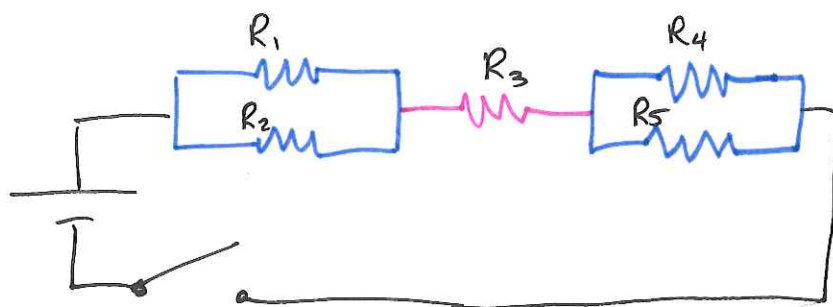
Complex Circuits have simple series + parallel on some circuit



Parallel  
 $R_1$  to  $R_2$   
 $R_1$  to  $R_3$   
Series  
 $R_2 + R_3$



Parallel  
 $R_1$  to  $R_2$   
Series  
 $R_2 + R_3$   
 $R_1 + R_3$



Parallel?

Series?